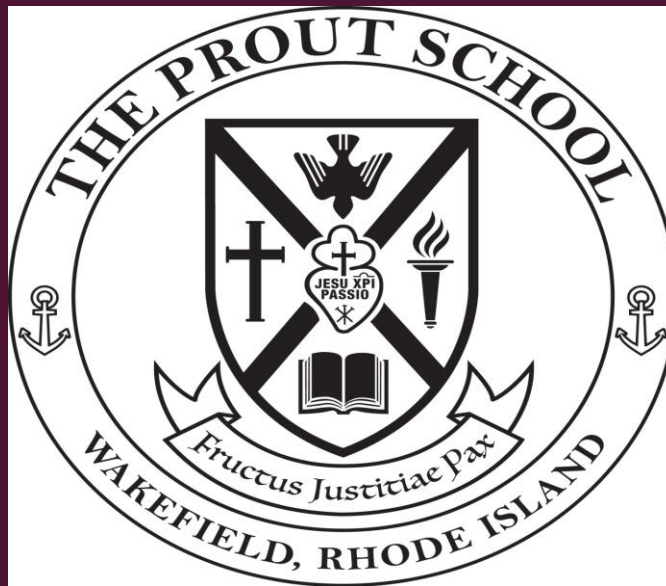


# WELCOME TO THE PROUT SCHOOL

ACADEMIC ORIENTATION

CLASS OF 2029



## OPENING PRAYER

Good and loving God,

We thank you for creating the world in all its beauty.

We thank you for memory, which enables us to build on the experiences of the past;  
for imagination, which admits us to a wider world than we could have otherwise  
known;

and for foresight, by which we plan for the future.

Bless these students—help them to recognize their God-given gifts, and help them  
strive to make a difference in the world.

We ask this in your name....Amen.

Venerable Mother Mary Joseph Prout...Pray for us

- *(adapted from a prayer by Joseph P. Shadle)*

# THE TRADITION OF THE PROUT SCHOOL

- Class of 2029 will be the 61<sup>st</sup> Graduating Class
- Founded by the Sisters of Cross and Passion
- A community of learners, believers, friends
- Academic strength through College Prep, Honors and IB



*Sisters of the  
Cross & Passion*

# GRADUATION REQUIREMENTS

- Successfully complete and earn 24 credits to obtain a Prout School diploma and complete 20 hours of service each year
- Theology 4 credits
- English 4 credits
- Phys Ed/Health 2 credits (1 semester per year)
- Mathematics 3 credits
- Science 3 credits
- Social Studies 3 credits
- Foreign Language 3 credits (3 year sequence in one language)
- Arts 1 credit (2 semesters)

# LEVELS OF CHALLENGE

COLLEGE  
Preparation



# IB LEARNERS' PROFILE



## *Inquirers*

“I try to approach learning with a positive spirit.”



## *Knowledgeable*

“I try to think about the world and the important things in my country and globally, and in the environment.”



## *Thinkers*

“I take personal responsibility for my decisions and my actions.”



## *Communicators*

“I listen to and respect the opinions of others.”



## ***Principled***

“I own up to my mistakes and take consequences for my actions.”



## ***Open-Minded***

“I respectfully listen to diverse points of view.”



## ***Caring***

“I show empathy, compassion, and respect towards others.”



## ***Risk-takers***

“I approach uncertainty with determination and perseverance.”



## ***Balanced***

“I understand the importance of balancing different parts of my life.”



## ***Reflective***

“I work to understand my own strengths as a person and also the areas I need to improve in.”

# PLACEMENT

- Seventh and Eighth Grade Report Cards
- Teacher recommendations and comments on Report Cards
- Standardized Testing (STARR, Terra Nova, etc.) and HSPT (“Entrance Exam”)

**STS' HIGH SCHOOL PLACEMENT TEST**

Report For: **THE PROUT SCHOOL (PD15)** Grade: **8** Section: **02E 1ST CHOICE** Date: **12/05/15**  
 Age: **1310** Gender: **M** Other-Codes: **Run: 12/26/15**  
 Elem: **H.S. Choices: 15 14** Other:

MAJOR TEST AREAS		PERFORMANCE SCORES				PERFORMANCE RATINGS									
		SS	GE	Local PCT-ST	Nat'l PCT-ST										
<b>COGNITIVE SKILLS</b>															
Verbal		617		88-7	91-8										
Quantitative		465		37-4	40-4										
TOTAL	CSQ = 109	534		64-6	64-6										
<b>BASIC SKILLS</b>															
Reading		548	9.3	69-6	72-6										
Mathematics		488	8.3	51-5	45-5										
Language		426	7.3	23-3	16-3										
TOTAL		482	8.3	45-5	46-5										
<b>COMPOSITE (w/o Option)</b>		501		52-5	51-5										

SCORE LEGEND: PCT - percentile rank, ST - stanine, SS - standard score, GE - grade equivalent, RS - raw score

PERFORMANCE RATINGS: The student's national percentile scores are also shown on the graph. A band of marks is used to allow for any inaccuracy in measurement; with the score for this testing being near the center. When comparing any two tests, it is likely that there is a true difference in scores only when the ends of the bands do not overlap.

For most uses performance may be judged by noting the shaded or unshaded rating column in which a band occurs. The High, Average, and Low ratings represent the highest 10%, middle one-third, and lowest 10% respectively. The Above Average represents the upper one-third (excluding the highest 10%) while the Below Average represents the lower one-third (excluding the lowest 10%).

SPECIFIC SKILLS: Each major test area consists of various specific skills detailed below. Performance is shown on each of these by the # of items answered correctly and may be evaluated by noting the shaded or unshaded column in which a single mark occurs. These columns have the same meaning as the shaded/unshaded columns in the Performance Ratings section.

SPECIFIC SKILLS		# OF ITEMS	NO. RIGHT	LOW	AVG	HIGH
<b>*****READING*****</b>						
Comprehension	40	27				
-Vocab in Context	6	6				
-Literal Comp	4	1				
-Inferential Comp	14	10				
-Main Idea	3	2				
-Draw Conclusions	6	5				
-Reasoning	2	1				
-Implied Character	3	2				
-Critical Comp	16	10				
-Author's Purpose	4	4				
-Comparison/Style	8	4				
-Fact/Fict/Predict	4	2				
Vocabulary	22	15				
<b>*COGNITIVE SKILLS*</b>						
VERBAL						
Analogy	10	9				
Logic	12	8				
Vb Classification	17	13				
Synonyms	12	9				
Antonyms	9	9				

SPECIFIC SKILLS		# OF ITEMS	NO. RIGHT	LOW	AVG	HIGH
<b>*****LANGUAGE*****</b>						
Punctuation	17	8				
Capitalization	3	0				
Incorrect Usage	15	7				
-Nouns/Pronouns	5	1				
-Verbs/Adv/Adj	5	3				
-Other Parts/Speech	5	3				
Correct Usage	5	2				
Spelling	10	1				
Composition	10	7				
<b>*COGNITIVE SKILLS*</b>						
QUANTITATIVE						
Sequence	23	8				
Reasoning	11	6				
Geometric Compariso	10	8				
Non-Geom Comparison	8	5				

SPECIFIC SKILLS		# OF ITEMS	NO. RIGHT	LOW	AVG	HIGH
<b>*****MATHEMATICS*****</b>						
Conceptual	20	13				
-Numbers/Numeration	5	2				
-Measurements	6	3				
-Geometry	6	6				
-Algebra	2	2				
-Stats/Probability	1	0				
Procedural	22	15				
-Numbers/Numeration	10	7				
-Measurements	3	3				
-Geometry	3	3				
-Algebra	4	1				
-Stats/Probability	2	1				
Applications	22	10				
-Numbers/Numeration	10	3				
-Measurements	1	1				
-Geometry	2	0				
-Algebra	3	1				
-Stats/Probability	6	5				



# PROGRAM OF STUDY

- Theology
- English
- Foreign Language
- Social Studies
- Mathematics
- Science
- PE/Health
- Art/Elective



- Overview of Catholic Faith & Sacred Scripture
- Freshman Retreat
- 20 hours of Christian Service



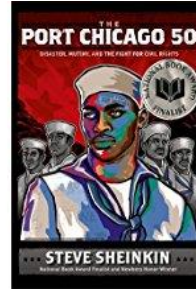
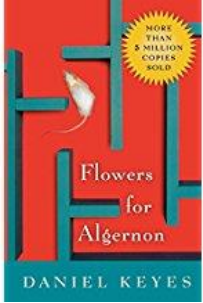


9 – Our Catholic Faith & Scripture

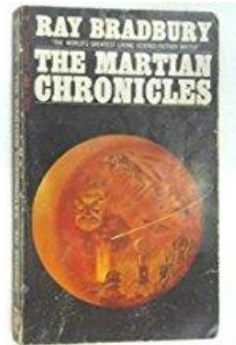
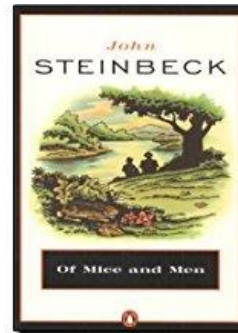
10 – Jesus, Source of Our Salvation; Jesus, Our Moral Guide

11 – Sacraments and Church

12 – IB World Religions (full year) OR  
Theology 12 (Prayer, Catholic Social Teaching)



- Critical thinking and writing skills are studied through literature
- College Prep and Honors classes use different texts to challenge reading level and understanding of literary devices
- Summer Reading



English

**English 9**  
Intro to Literature

**English 10**  
American Literature

**English 11**  
British Literature

**English 12**  
World Literature

**English 9 H**

**English 10 H**

**English 11 IBSL**

**English 12 IBSL**

**English 11 IBHL**

**English 12 IBHL**



- French, Italian, or Spanish
- 3 years sequential
- Students sitting for the IB exam must be seniors



# Foreign Language



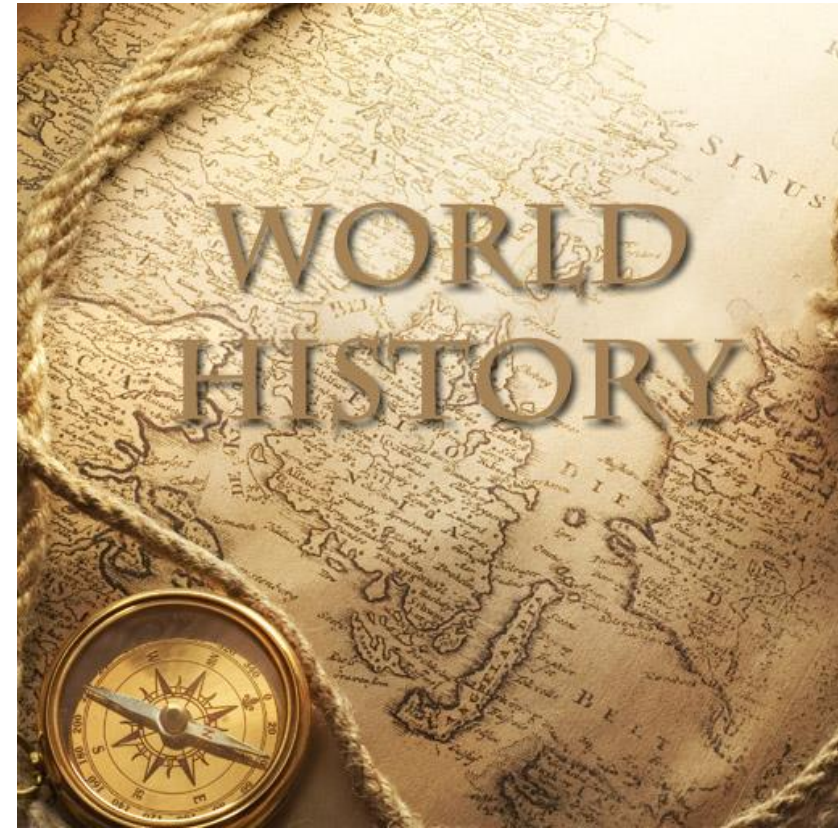
Language 1 → Language 2 → Language 3 → Language 4

Language 1 H → Language 2 H → Language 3 H → Language 4 H

Language 3 IB → Language 4 IB



- World History (CP or H)
- Antiquity through 19<sup>th</sup> century



Social Studies



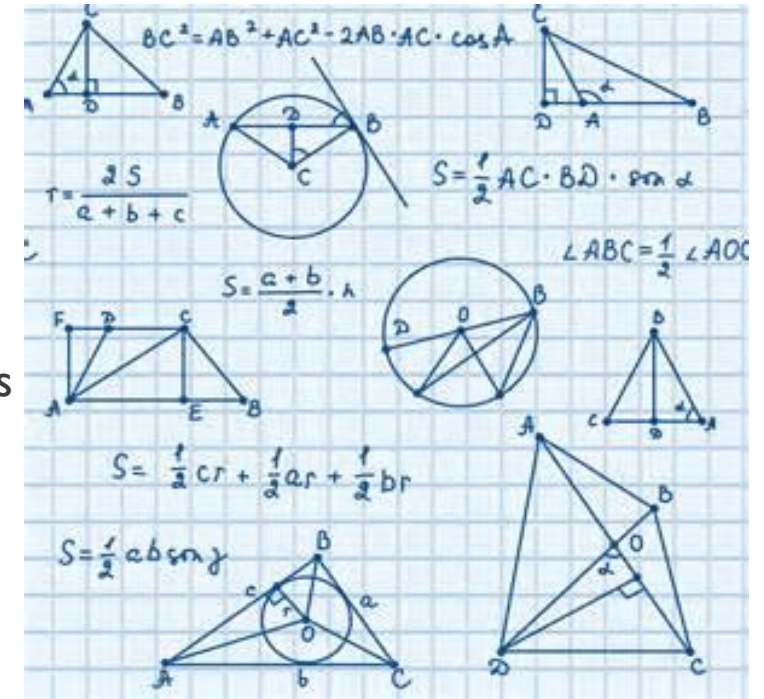
---

World History → US History → Psychology I & 2 → Same Choices  
Environmental Justice  
Economics  
Global Studies

World Hist H → US History H → Psychology I & 2 H → Same Choices  
Law H (sem)  
Global Studies

AP US Hist → World History HL I IB → World Hist HL2 IB  
World History SL I IB → World Hist SL2 IB

- Algebra I – Factoring, Polynomials, Systems of Equations, Coordinate Geometry, Radicals, Linear Functions, Exponential Functions
- Algebra IH – includes topics from Algebra 2H, Inequalities
- Geometry H – Reasoning, Formal Proofs, 2 Column Proofs, Congruence, Lines, Right Triangle Trig., Polygons, Surface Area & Volume of Geom. Figures
- Algebra 2-Linear Functions, Quadratic Functions, Complex Numbers, Polynomial Functions, Radical Functions, Exponential and Logarithmic Functions
- Algebra 2H—same as Alg 2, plus Matrices, Rational, Radical, Exponential and Logarithmic Functions
- Summer Review Packet



# Mathematics

Algebra I → Geometry → Algebra 2 → Personal Finance  
Pre-Calculus

Algebra IH → Geometry H → IBAI Math SL I → IBAI SL 2

Geometry H → Algebra 2H → IBAA Math HL I → IBAA Math HL 2  
IBAA Math SL I → IBAA Math SL 2

Algebra 2H → IBAI Math SL 2 → IBAA Math HL I → IBAA Math HL 2

---

- Biology 9 or 9H

Cell, Genetics, Evolution, Monera, Protists  
and Fungi, Multicellular Plants and Animals,  
Ecology

Lab investigations and cooperative learning activities



Science

Biology → Chemistry

Biology H → Chemistry H

## **One Semester Courses**

Forensic Science CP

Marine Science & Aquaculture CP

Oceanography CP

## **One Year Courses**

Environmental Science

Physics Honors

Human Anatomy & Physiology CP & H

## **Two Year Courses**

IB Biology HL

IB Design Tech SL

IB Physics HL

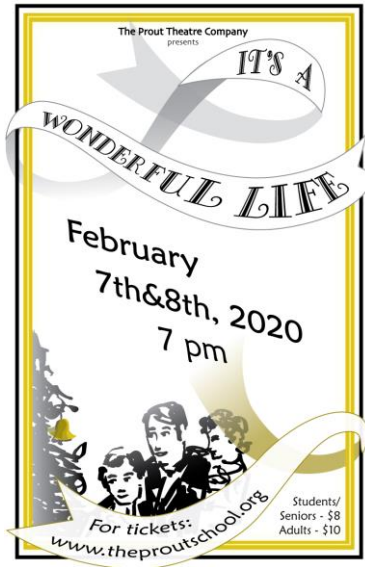
IB Physics SL

- Physical Education / Health
- Holistic Wellness / Health
- Dance / Health



PE/Health





“NOT EVERYTHING IS GOOD FOR EVERYONE, AND  
NO ONE ENJOYS EVERYTHING” – SIRACH 37:28

# Electives

# 8 PERIOD SCHEDULE

Dance? Choir?  
Jazz Band?  
Study - 1  
semester or 2?



- A Theology
- B English
- C Italian
- D World History
- E Algebra I
- F Biology
- G Holistic Wellness/ Visual Art
- I
- H ? / ?

Band? Strings?  
PE?  
Creative Writing?

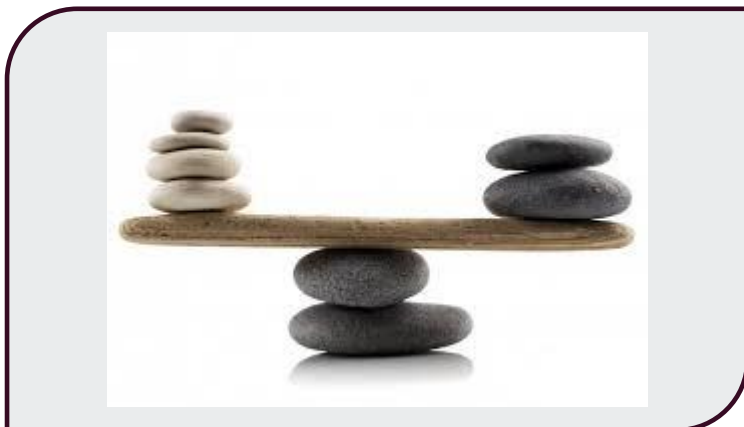
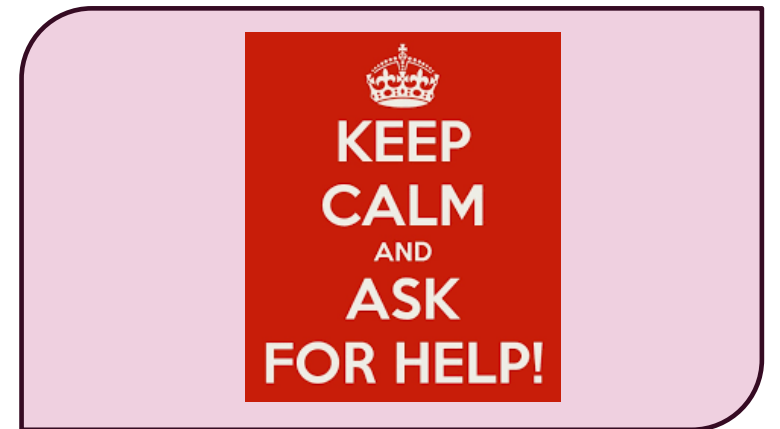
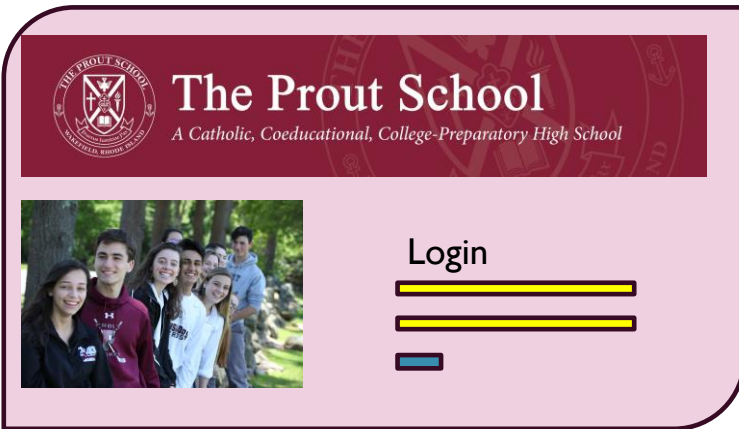




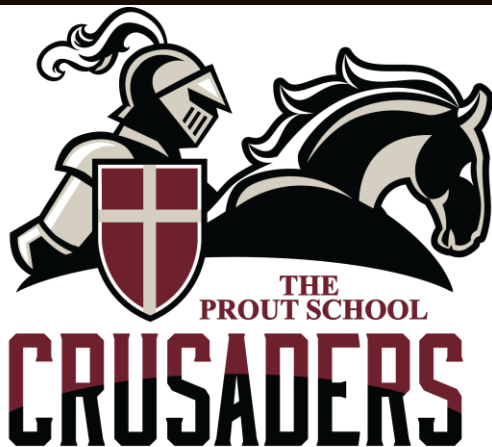
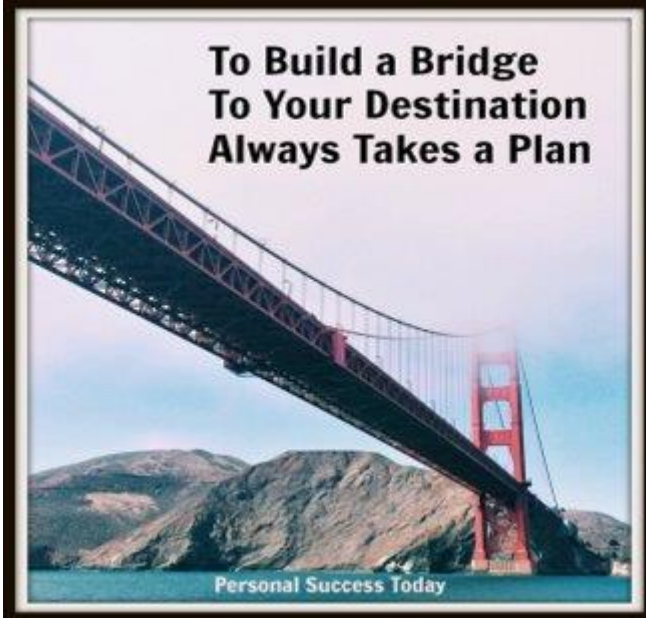
# STUDENT PORTFOLIO



# ODDS AND ENDS



# TRANSITIONING FROM MIDDLE SCHOOL TO HIGH SCHOOL



**The Prout School recognizes the academic, emotional, and social challenges every incoming freshmen faces. Entering high school, like entering college, is an exciting transitional journey from the known to the **temporarily unknown**: a gateway to learning about self, one's new role in the Prout community, one's passions and talents, and one's best academic learning styles.**

**In every life transition, we need to feel a sense of connection to the new situation: a sense of belonging, of being valued, of security and comfort, of familiarity, of knowing the expectations, and of welcoming acceptance.**

**This is what the Prout community is all about**

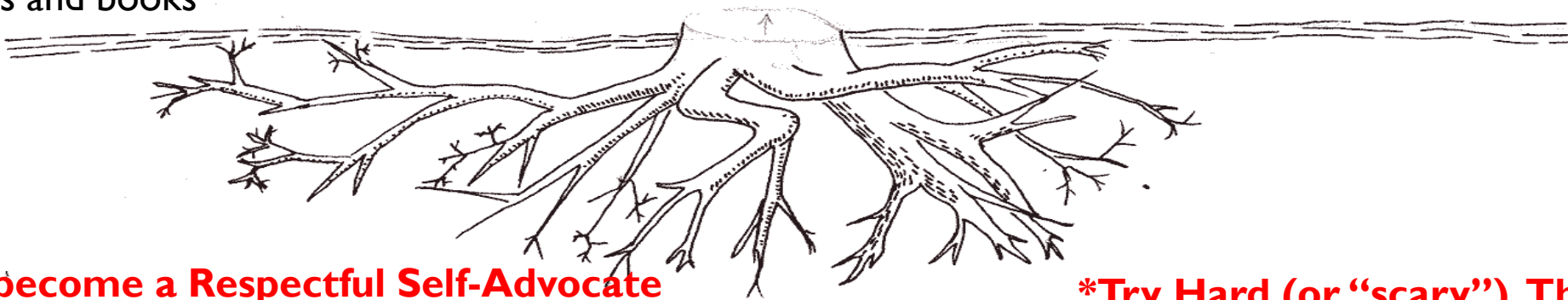
# FRESHMAN YEAR

## \* Make a “study zone”

- Establish strong study skills
  - Homework matters!
- Set personal and academic goals
- Develop a reading plan that includes newspaper, magazines and books

## \*Explore extra-curricular activities

- Try something new that interests you
- Become actively engaged in community service work
- Have a meaningful summer experience (job, volunteering, class)



## \*Work to become a Respectful Self-Advocate

- Ask for what you need and/or for help
- Talk to your teachers
- Talk to your Guidance Counselor

## \*Try Hard (or “scary”) Things

- Talk to new people
- Do new things like class presentations
- Keep an open mind

# GETTING INVOLVED IN EXTRACURRICULAR ACTIVITIES

- **Further developing skills you already have**
- **Discovering some new talents/interests you didn't even know you had**
- **Making new friends who share your same interests/talents**
- **Having fun**
- **Learning important life skills: leadership, team work, patience, creativity, time management, determination, perseverance**
- **Staying healthy physically, mentally, and socially**
- **Building a GREAT resume for college applications jobs, and internships**



# EXTRACURRICULAR ACTIVITIES

<b>A Capella Club</b>	<b>Art Club</b>	<b>Blessed Carlo Acutis Club</b>	<b>Book Club</b>	<b>Cheerleading (Club Sport)</b>
<b>Chess Club</b>	<b>Cookie Club</b>	<b>Dance Club</b>	<b>French Club</b>	<b>Improv Club</b>
<b>Italian Club</b>	<b>Peer to Peer</b>	<b>Knitting and Tea Club</b>	<b>Academic Decathlon</b>	<b>Math Team</b>
<b>Mock Trial</b>	<b>Model Legislature</b>	<b>Photography Club</b>	<b>Ping Pong Club</b>	<b>Recycling and Garden Club</b>
<b>Robotics</b>	<b>Rock Climbing Club</b>	<b>Sailing (Club Sport)</b>	<b>Saint John Paul II Club</b>	<b>Spanish Club</b>
<b>Student Ambassadors</b>	<b>Student Council</b>	<b><i>The HEART</i> Magazine</b>	<b>Yearbook</b>	<b>Youth Force</b>



# AS A PROUT CRUSADER

# Welcomed

# ARE:

# HONORED

# end Respected

# Important

# Acknowledged

# You are the reason we are here

# HOW WILL I MAKE POSITIVE CONTRIBUTIONS TO THE PROUT COMMUNITY



**Believe in self and the special talents God has given you**

**Know that although academics are important, there is much , much more to each person than grades – No one is a number at Prout**

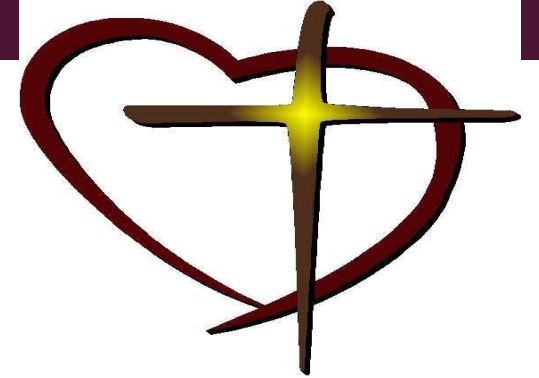
**Remember as a member of the Prout family, just like in any family, you have responsibilities**

**Know that school “rules” are designed for the creation of a school environment where everyone feels safe, accepted, and comfortable**

**Understand what is expected of you as a representative of Prout where ever you go**



# WHAT DO WE EXPECT OF ALL MEMBERS OF THE PROUT SCHOOL COMMUNITY



**Respect Others**

**Accept Others**

**Be Kind**

**Respect Self**

**Work Hard**

**Stay Humble**

**Use Your God-  
Given Talents**

**Respect the  
Property**

# 7 ways to show you're All About RESPECT



**R** Realizing we never really know what someone else is dealing with

**E** Examining our own bias'

**S** Seeing the best in each other

**P** Preparing to meet others with open-mindedness

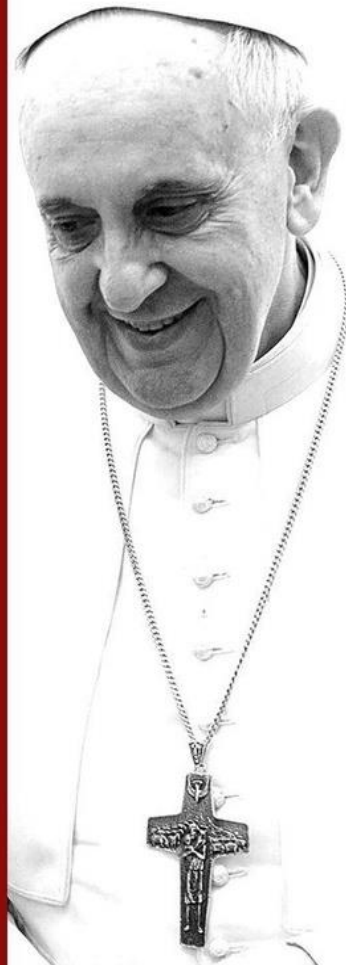
**E** Eliminating hatred and violence in our own hearts

**C** onsidering the feelings of others

**T** hinking about how to positively affect the lives of others

# FOCUSING ON OUR GOD GIVEN TALENTS AND GIFTS

DEAR YOUNG  
**PEOPLE,**  
DO NOT BURY YOUR  
**TALENTS,**  
THE GIFTS THAT  
**GOD**  
HAS GIVEN YOU!  
DO NOT BE AFRAID  
TO DREAM OF  
**GREAT**  
**THINGS!**  
POPE FRANCIS



**As a child of God and as Crusaders, you are called upon to use your gifts to enhance the Prout community and the community at large, and to help those in need.**

**May we nurture our God-given gifts and employ them every day. May we help others to feel loved and cared for, and help us to develop inner happiness and peace and a stronger relationship with God.**

**During the 2025-2026 academic year, students are required to complete at least 10 service hours by the day before midterm exams, and 10 additional hours by the day we return from April break. Students will submit their verification forms to their theology teacher. Students are asked to choose an organization from those listed below or from your parish/church. Any organization not listed here must receive prior approval from your religion teacher.**

**(You may start your service hours this summer)**

**American Cancer Society**

**American Red Cross**

**Boy Scouts**

**Catholic Relief Services**

**Confetti Foundation**

**Crossroads Rhode Island**

**Elderwood of Scallop Shell**

**Girl Scouts**

**Veterans Administration**

**Gloria Gemma Foundation**

**Habitat for Humanity**

**Jonnycake Center**

**Make-A-Wish Foundation**

**Prout Ambassadors Program**

**Prout Garden Project**

**Save the Bay**

**Special Olympics**

**St. Vincent DePaul Society**

**Go to the Prout website**

**Life at Prout**

**Catholic Identity**

**Christian Service**

**Form**

# ELIZABETH PROUT SERVICE INITIATIVES

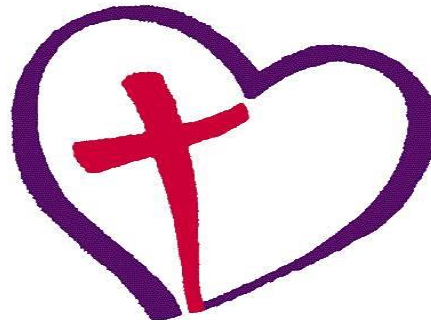
- Our School Namesake and Patroness, (Elizabeth) Mother Mary Joseph Prout had a charism for **SERVICE**.
- Jesus reminds us that we are called to **SERVE one another**.

## **ELIZABETH PROUT SERVICE DAYS**

- Promotion & safeguarding of human dignity
- Christian charity expressed in concrete acts of service
- Corporal Works of Mercy

- Each class will learn about a charitable, non-profit organization rooted in the Corporal Works of Mercy.
- Each class will travel to a service site for a day

*"Whatever you do to the least of these,  
you do to me"  
(Mt 25:40)*



*Meanwhile, these three remain:  
Faith, hope, and love.  
And the greatest of these is love.  
(1 Cor 13:13)*



# **BECOMING THE BEST VERSION OF YOURSELF – AND THE PERSON GOD MEANS FOR YOU TO BE**

**Spiritually**

**You are a  
child of  
God**

**Creatively**

**Socially**

**Academically**

**Personality**

**Athletically**

**Family Values**

**Emotionally**

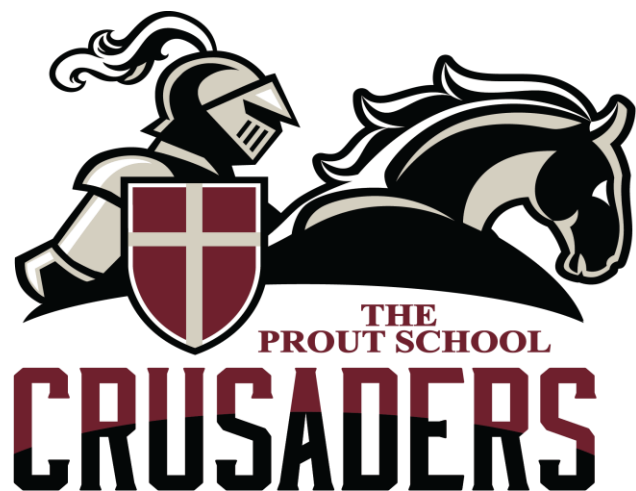
**This place where you are right now, God  
circled on a map for you.**



**There are no strangers at The Prout School- only friends you haven't met yet**

**Everyone is someone with whom we can find common ground and heart connections**

**We are a community of learners ... a community of believers...and a community of friends**



**We cannot wait to see how YOU will make The Prout School an even BETTER community than it already is**

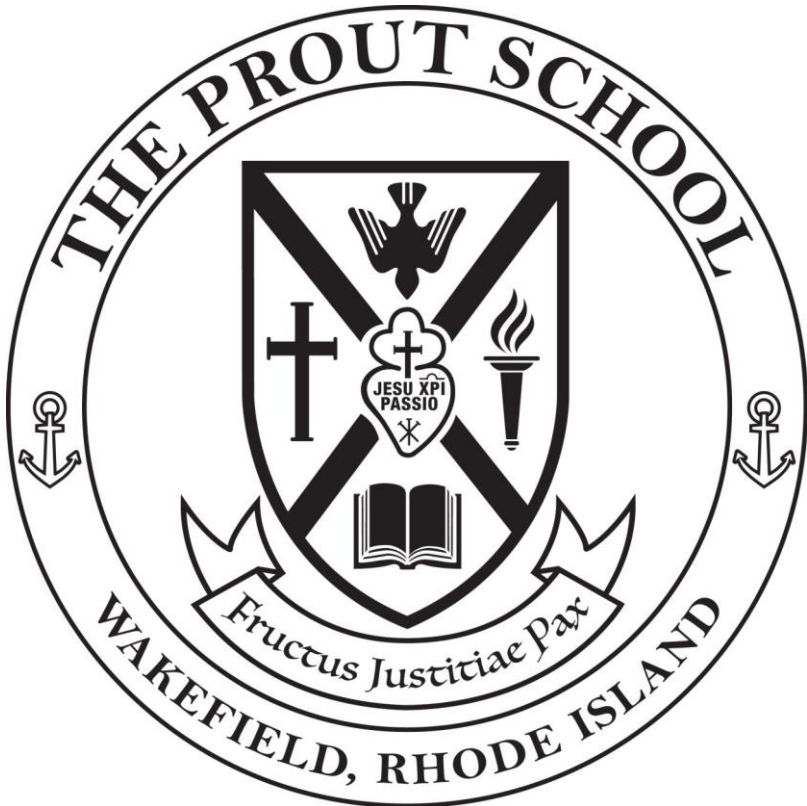
# LOOKING FORWARD



**Being a Prout Crusader is a GREAT adventure – utilize every minute because it goes by quickly- and soon this will be YOU at graduation**



## CONTACT INFORMATION - ACADEMICS



Ms. Mary Hoyt, Director of Guidance

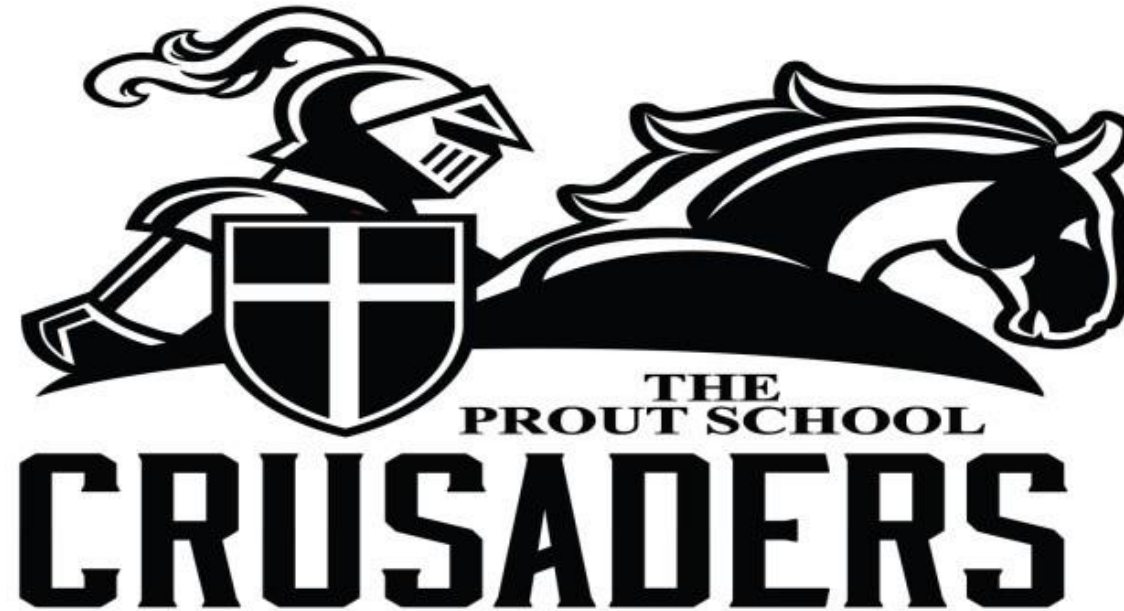
[mhoyt@theproutschool.org](mailto:mhoyt@theproutschool.org)

(401) 789-9262 x 530

Ms. Lily Araujo, Guidance Counselor

[laraujo@theproutschool.org](mailto:laraujo@theproutschool.org)

(401) 789-9262 x 543



**“Success is no accident. It is hard work, perseverance, learning, studying, sacrifice and most of all, love of what you are doing or learning to do.” - Pele**